

EARTH PIERCING

PVH45 PVH54 PVH54S Short PVH65
PVH70 PVH70S Short PVH76 PVH76S Short
PVH85 PVH100 PVH108 PVH130 LW



THE EARTH PIERCER – A highly reliable & productive piece of technology

This earth displacement tool is used for the creation of a round cavity in displaceable soil into which conduits for water, gas, electricity and telecommunications cables can be easily installed.



PneuVibe offers two alternative head designs for the earth piercer depending upon varying soil conditions.

A fixed tapered head for the easy going, soft and sandy conditions and a high impact chiselling moving head for the hard type of conditions that include clay and firm compacted soil.

This pneumatic piercing tool is manufactured from high grade alloy steels, heat treated to maximum hardness, resulting in an extremely long life on the wear faces.

PneuVibe impact moles are equipped with a quarter turn reverse function, self-aligning piston valve and replaceable piston seals. This all combines to result in an easy start, seamless to use, and highly productive tool.

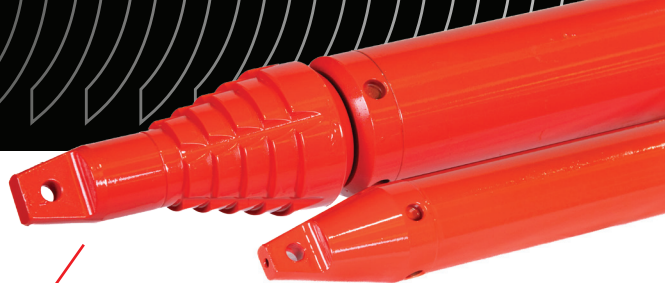
There are also various accessories to go along with the earth piercing tools such as, oil misters/lubricators, tool oil, air hose lines, telescopic sighters, range poles, launchers and pipe pulling carrots.



PNEUVIBE Earth Piercers are manufactured in Australia

EARTH PIERCERS

Pneuvibe impact moles are equipped with a quarter turn reverse function, self-aligning piston valve and replaceable piston seals.



SPECIFICATIONS

MODELS	Diametre (mm)	Length (mm)	Weight (kg)	Air Required (L/min/CFM)	Operating Pressure(bar)
PVH45	45	990	8	510 / 18	7 bar
PVH54	54	1180	17	708 / 25	7 bar
PVH54S Short	54	1050	12	650 / 23	7 bar
PVH65	65	1175	20	960 / 34	7 bar
PVH70	70	1300	28	990 / 35	7 bar
PVH70S Short	70	1175	25	990 / 35	7 bar
PVH76	76	1415	34	1360 / 48	7 bar
PVH76 Short	76	1230	26	1360 / 48	7 bar
PVH85	85	1415	39	1360 / 48	7 bar
PVH100	100	1740	73	2124 / 75	7 bar
PVH108	108	1740	82	2124 / 75	7 bar
PVH130 LW	130	1740	84	2124 / 75	7 bar

ACCESSORIES

